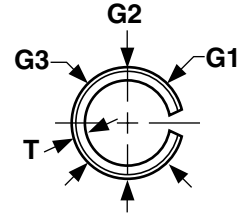
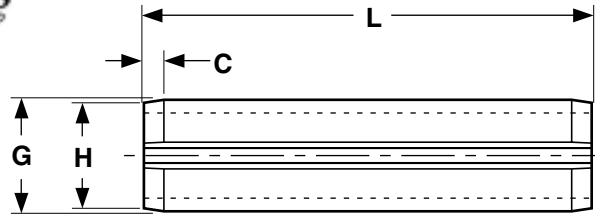




# Pins

## Spring Pins



Nominal Size or Basic Pin Diameter	G		H	C		T	Recommended Hole Size		
	Pin Diameter		Chamfer Diameter	Chamfer Length		Wall Thickness	Max	Min	
	Max*	Min**	Max	Max	Min	Basic			
1/16	.062	0.069	0.066	0.059	0.028	0.007	0.012	0.065	0.062
5/64	.078	0.086	0.083	0.075	0.032	0.008	0.018	0.081	0.078
3/32	.094	0.103	0.099	0.091	0.038	0.008	0.022	0.097	0.094
1/8	.125	0.135	0.131	0.122	0.044	0.008	0.028	0.129	0.125
5/32	.156	0.167	0.162	0.151	0.048	0.010	0.032	0.160	0.156
3/16	.188	0.199	0.194	0.182	0.055	0.011	0.040	0.192	0.187
7/32	.219	0.232	0.226	0.214	0.065	0.011	0.048	0.224	0.219
1/4	.250	0.264	0.258	0.245	0.065	0.012	0.048	0.256	0.250
5/16	.312	0.330	0.321	0.306	0.080	0.014	0.062	0.318	0.312
3/8	.375	0.395	0.385	0.368	0.095	0.016	0.077	0.382	0.375
7/16	.438	0.459	0.448	0.430	0.095	0.017	0.077	0.445	0.437
1/2	.500	0.524	0.513	0.485	0.110	0.025	0.094	0.510	0.500

Tolerance on Length	Nominal Pin Length			
	Up to 1 in., Incl.	Over 1 to 2 in., Incl.	Over 2 to 3 in., Incl.	Over 3 to 4 in., Incl.
	±0.015	±0.020	±0.025	±0.030

ASME B18.8.2

\*Maximum diameter shall be checked using a "GO" ring gauge.

\*\*Minimum diameter shall be equal to average of three diameters measured at points as illustrated above: G min = \_\_\_\_\_

**The value-added source for quality bolts, screws, nuts, washers and other industrial fasteners.**

3211 West 9th Street, Trainer, PA 19061-5242 TOLL FREE: 1-800-662-7459 LOCAL: 610-485-5700 FAX: 610-485-5877

E-MAIL: [sales@coburnmyers.com](mailto:sales@coburnmyers.com)